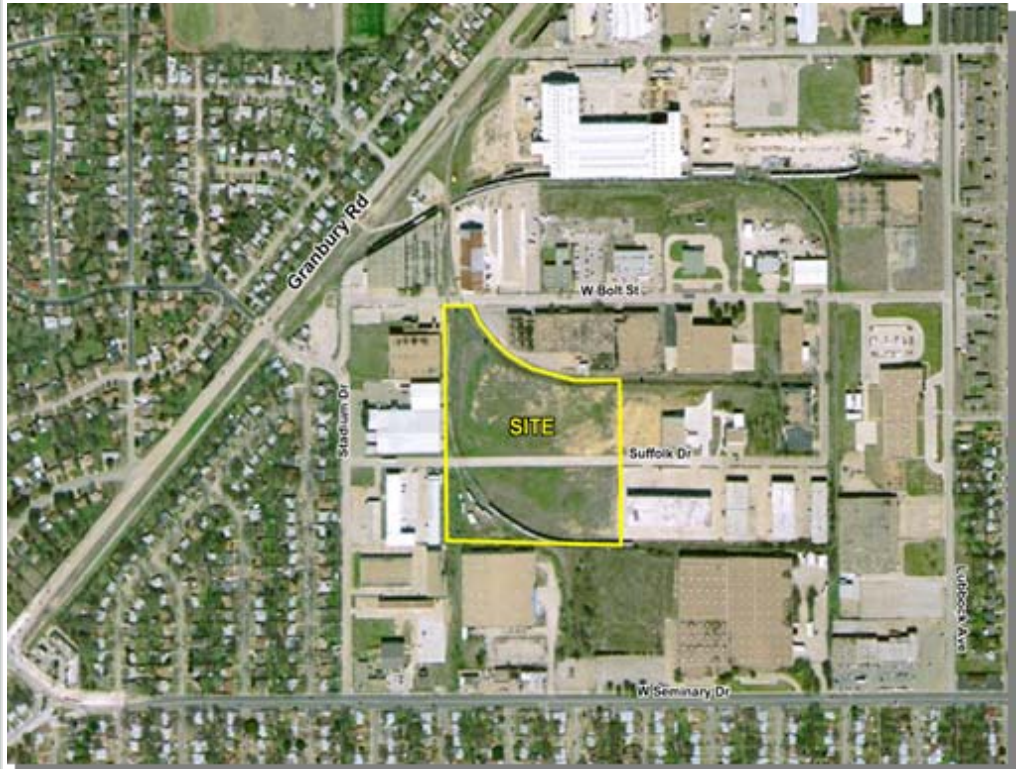


# SUFFOLK DRIVE

10.274 Acres

INDUSTRIAL LAND  
For **SALE**



For more information, contact:

**Blake Lloyd**  
T 817 333 1112  
F 817 335 6001  
blake.lloyd@cbre.com

CB Richard Ellis  
201 Main Street, Suite 1201  
Fort Worth, TX 76102  
T 817 335 6000  
F 817 335 6001

[www.cbre.com](http://www.cbre.com)

## Property Features

- Land Size
  - North: 6.308 acres
  - South: 3.966 acres
  - Totaling: 10.274 acres
- Divisible to 1.3 acres
- Utilities to site
- Zoned K Industrial
- Located in the TCU Area
- Sale Price: \$2.50 per SF

©2006, CB Richard Ellis, Inc. We obtained the information above from sources we believe to be reliable. However, we have not verified its accuracy and make no guarantee, warranty or representation about it. It is submitted subject to the possibility of errors, omissions, change of price, rental or other conditions, prior sale, lease or financing, or withdrawal without notice. We include projections, opinions, assumptions or estimates for example only, and they may not represent current or future performance of the property. You and your tax and legal advisors should conduct your own investigation of the property and transaction.

**CBRE**  
CB RICHARD ELLIS

# SUFFOLK DRIVE

10.274 Acres

INDUSTRIAL LAND  
For **SALE**

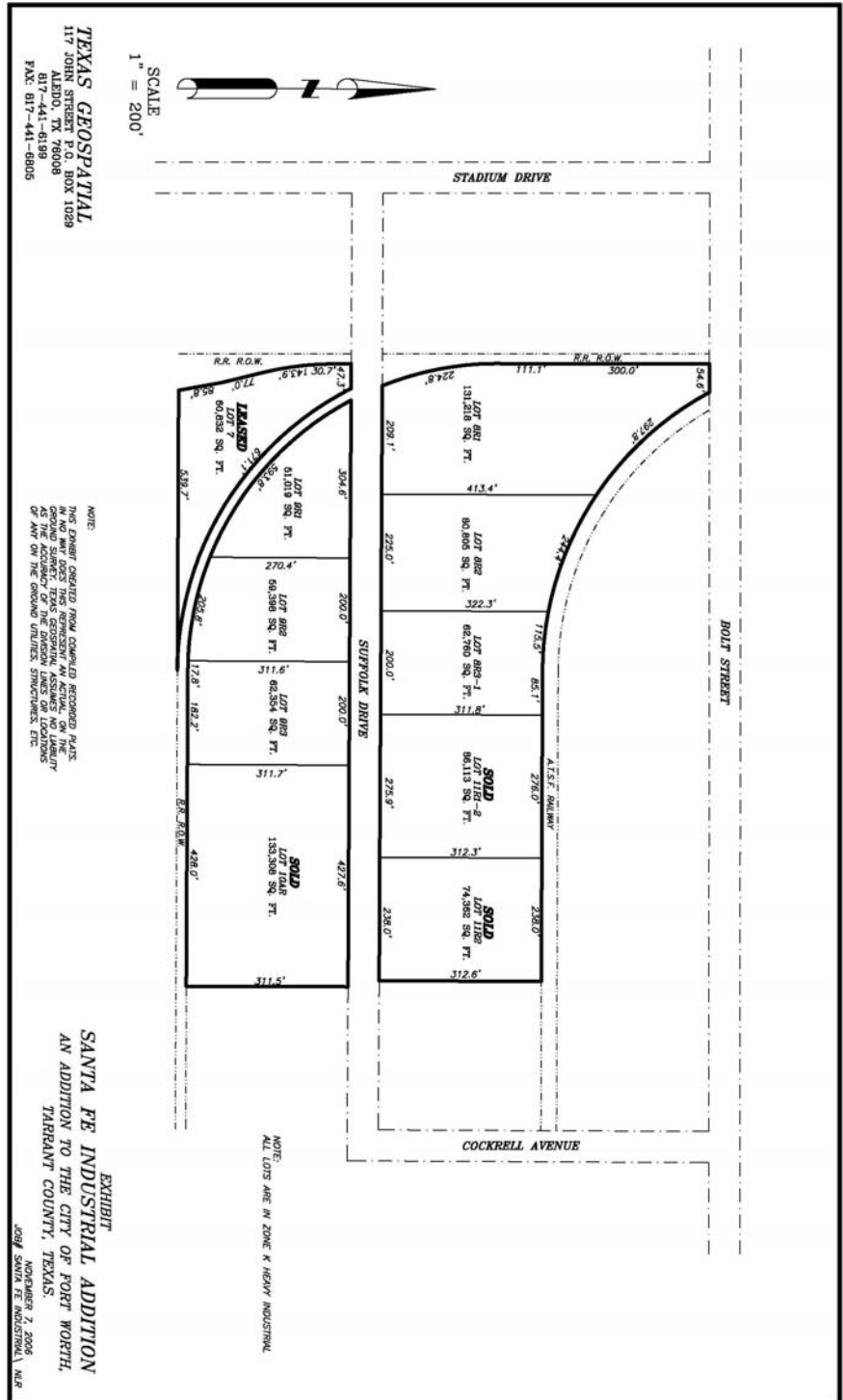
For more information, contact:

**Blake Lloyd**  
T 817 333 1112  
F 817 335 6001  
blake.lloyd@cbre.com

CB Richard Ellis  
201 Main Street, Suite 1201  
Fort Worth, TX 76102  
T 817 335 6000  
F 817 335 6001

www.cbre.com

## Property Plat Map



©2006, CB Richard Ellis, Inc. We obtained the information above from sources we believe to be reliable. However, we have not verified its accuracy and make no guarantee, warranty or representation about it. It is submitted subject to the possibility of errors, omissions, change of price, rental or other conditions, prior sale, lease or financing, or withdrawal without notice. We include projections, opinions, assumptions or estimates for example only, and they may not represent current or future performance of the property. You and your tax and legal advisors should conduct your own investigation of the property and transaction.

**CBRE**  
CB RICHARD ELLIS